

PART OF S.E. 1/4, SEC. 13, T.5N., R.3W., S.L.B. & M.

6

HOOPER CITY
LOTS 5 TO 6, PLAT "B"

TAXING UNIT: 31

SCALE 1" = 100'

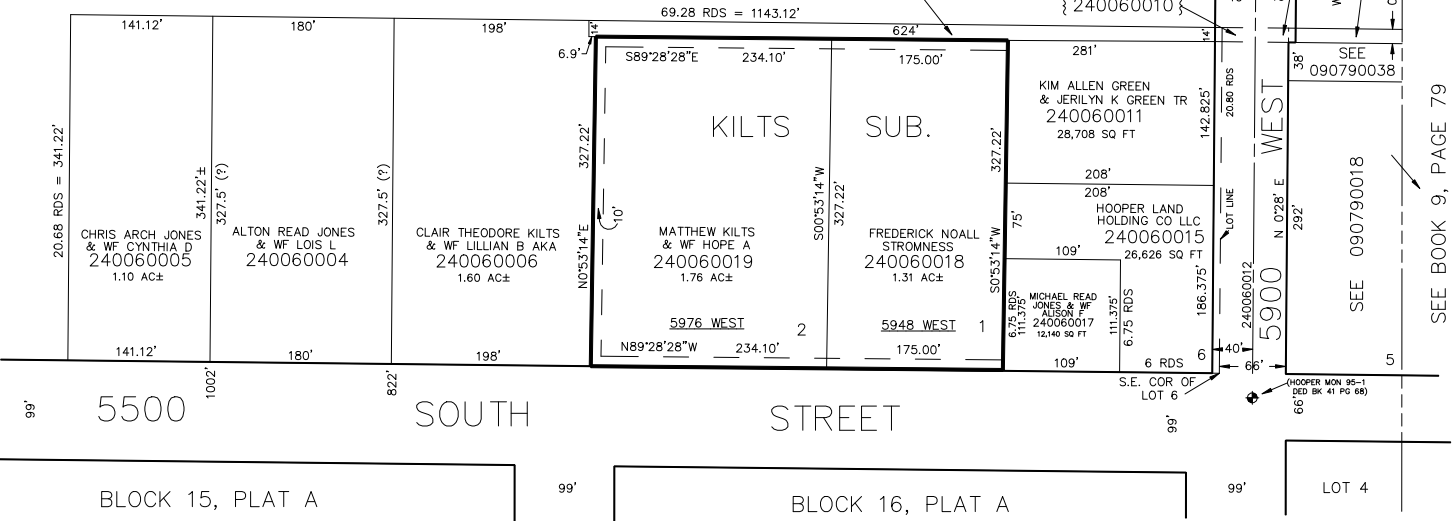
SEE BOOK 10, PAGE 14

ADAM H. SCHNEIDER
MICHELLE G. FOWERS
{ 240060009 }

STATE ROAD COMMISSION
{ 240060010 }

STATE ROAD COMMISSION
{ 240060003 }

WALTER W. BOEHME
& WIFE
{ 240060002 }



SEE PAGE 4